



**RECTOR REGULATION
ISLAMIC UNIVERSITY OF INDONESIA
NOMOR 19 YEAR 2020
ABOUT
ORGANIZING LEARNING OUTSIDE OF STUDY PROGRAMS IN THE
ISLAMIC UNIVERSITY OF INDONESIA**

Bismillahirrahmanirrahim

RECTOR ISLAMIC UNIVERSITY OF INDONESIA

CONSIDERING

- a. that the Indonesian Islamic University is an institution that has the main task of providing education
- b. that the Islamic University of Indonesia needs to prepare graduates who have adaptability, flexibility, and independence in developing attitudes, knowledge and skills through learning activities outside the study program;
- c. that the government's policy on Independent Learning-Independent Campuses, especially learning outside the study program, challenges to provide opportunities and development of creativity, capacity, and personality of students;
- d. that based on the considerations as referred to in letters a, b, and c, it is necessary to stipulate a Rector's Regulation concerning the Implementation of Learning Outside Study Programs at the Indonesian Islamic University.

OBSERVING

1. Law of the Republic of Indonesia Number 20 of 2003 concerning the National Education System (State Gazette of the Republic of Indonesia of 2003 Number 78 and Supplement to State Institutions of the Republic of Indonesia Number 4301);
2. Law of the Republic of Indonesia Number 12 of 2012 concerning Higher Education (State Gazette of the Republic of Indonesia of 2012 Number 158 and Supplement to State Institutions of the Republic of Indonesia Number 5336);
3. Government Regulation Number 4 of 2014 concerning the Implementation of Higher Education and Management of Higher Education (State Gazette of the Republic of Indonesia) Indonesia 2014 Number 16 and Supplement State Gazette of the Republic of Indonesia Number 5500);
4. Presidential Regulation Number 8 of 2012 concerning the Indonesian National Qualifications Framework (State Gazette of the Republic of Indonesia of 2012 Number 24);
5. Regulation of the Minister of Research, Technology and Higher Education of the Republic of Indonesia Number 62 of 2016 concerning the Higher Education Quality

Assurance System (State Gazette of the Republic of Indonesia of 2016 Number 1462;

6. Regulation of the Minister of Education and Culture of the Republic of Indonesia Number 3 of 2020 concerning National Standards for Higher Education (State Gazette of the Republic of Indonesia of 2020 Number 47);
7. Decree of the Trustees of the Indonesian Islamic University Waqf Foundation Number VI/TAP/PBN/IX/2017 concerning Ratification of the Statute of the Indonesian Islamic University;
8. Indonesian Islamic University Regulation Number 2 Year 2017 on the Education Process and Learning at the Islamic University of Indonesia;
9. Rector's Regulation Number 11 of 2017 concerning Learning Outcomes of University Graduates and University Compulsory Courses as amended by Rector's Regulation Number 7 of 2018 concerning Amendments to Rector's Regulation Number 11 Year 2017 on Graduate Learning Outcomes University and University Compulsory Courses;
10. Rector's Regulation Number 12 of 2017 concerning Guidelines for Preparation of Learning Planning Documents in the Indonesian Islamic University;
11. Rector's Regulation Number 2 of 2019 concerning Guidelines for Preparation of Study Program Curriculum at the Indonesian Islamic University;
1. Academic Affairs Meeting on October 7 2020;
2. Indonesian Islamic University Leadership Meeting on December 16, 2020

NOTICE

DECIDE :

TO ENACT

REGULATION OF THE RECTOR OF THE UNIVERSITY OF ISLAMIC INDONESIA CONCERNING THE ORGANIZATION OF LEARNING OUTSIDE THE STUDY PROGRAM IN THE ENVIRONMENT OF THE INDONESIAN ISLAMIC UNIVERSITY

CHAPTER I GENERAL REQUIREMENTS

Article 1

In this regulation what is meant by:

1. Ministry is the Ministry of Education and Culture of the Republic Indonesia.
2. Indonesian Islamic University, hereinafter abbreviated as UII, is a higher education institution organized by the UII Waqf Foundation.
3. The Chancellor is the Chancellor of UII.
4. The Vice Chancellor is the Vice Chancellor of UII.
5. University is a work unit domiciled in the UII rectorate environment.
6. Faculties are faculties at UII which are academic implementing elements that function to coordinate academic, professional, and/or vocational education in 1 (one) or a set of

- branches of religious science, science, technology, culture, literature, and/or certain arts which include one or several programs/levels of education.
7. Department is a Department at UII which is a collection of resources in one particular scientific field that organizes and manages several Study Programs.
 8. Study Program is a Study Program at UII which is a unit of education and learning activities that have a certain curriculum and learning method in one type of academic education, professional education, and/or vocational education.
 9. Curriculum is a set of plans and arrangements regarding Graduate Learning Outcomes, study materials, processes, and assessments that are used as guidelines for administering study programs.
 10. Permanent Lecturers are lecturers with permanent educator status at UII.
 11. Students are community members who develop their potential through the learning process, and are registered in the UII student registration system.
 12. The Independent Learning Policy-Independent Campus is a policy issued by the Ministry regarding:
 - a. autonomy for State Universities (PTN) and Private (PTS) to open or establish new study programs;
 - b. automatic re-accreditation program for all ranks and voluntary for universities and study programs that are ready to rank up;
 - c. freedom for PTN Public Service Agency (BLU) and Work Unit (Satker) to become PTN Legal Entity (PTN BH); and
 - d. give students the right to carry out learning programs outside the study program.
 13. Learning Outside the Study Program is a learning program in the form of lecture learning activities and non-lecture learning activities that can be taken by students:
 - a. outside the study program at the same university;
 - b. in the same study program at different universities;
 - c. in different study programs at different universities; and/or
 - d. at non-college institutions.
 14. Lecture Learning Activities Outside the Study Program include lectures, practicum, responses and tutorials, as well as other similar forms of learning carried out outside the study program as a Student Exchange program.
 15. Non-Lecture Learning Activities outside the Study Program include the form of Internship learning/Work Practices, Teaching Assistance in Education Units, Research/Research, Humanitarian Projects, Entrepreneurial Activities, Independent Studies/Projects, and Building Thematic Real Work Villages/Lectures.
 16. Student Exchange is a cross-university learning activity both at home and abroad.
 17. Internships/Work Practices are learning activities in the industry/professional world to provide hands-on learning experiences in the workplace (experiential learning) in order to develop hard skills (such as complex problem solving skills and critical and analytical thinking skills), as well as soft skills (such as professional ethics). / work, communication, and cooperation).
 18. Research/Research is a learning activity in the form of research activities in research institutes/study centers/laboratory or other research unit.
 19. Teaching Assistance in Education Units is a learning activity in the form of teaching assistance by students in educational units such as elementary, middle, and high schools.
 20. The Humanitarian Project is a learning activity through the involvement of students in humanitarian programs including da'wah carried out by social, community, da'wah, and humanitarian institutions or organizations at home and abroad.

21. Entrepreneurial activities are learning activities in the form of entrepreneurship run by students.
22. Independent Studies/Projects are learning activities that provide opportunities for students to create innovative works or works to be contested at regional, national, and international levels.
23. Building a Thematic Village/Real Work Lecture (KKN) is a form of learning that provides students with experience to live in a community outside the campus, which directly together with the community develops potential and implements solutions to problems that exist in the village/region.
24. University Courses are courses organized by the University that can be followed by students from all study programs within the UII with the person in charge of the Vice Chancellor for Academic Development and Research.
25. Unit is a work unit within UII which consists of Universities, Faculties, Departments, Study Programs, or Study Centers.
26. Semester Credit Units, which are abbreviated as credits, are the amount of time for learning activities charged to students which is equivalent to 170 (one hundred and seventy) minutes of learning activities per week per semester or ranging from 2720 minutes to 3740 minutes per semester in the learning process through various forms of learning or the amount of recognition for the success of students' efforts in participating in curricular activities in a study program.
27. Semester Learning Plan, hereinafter abbreviated as RPS, is a learning planning document for certain lecture learning activities designed in 1 (one) semester which is intended as a general guide for students in carrying out the learning process to meet Graduate Learning Outcomes determined by the study program.
28. Non-Lecture Learning Plans, hereinafter abbreviated as RPNP, are learning planning documents for certain non-lecture learning activities that are intended as general guidelines for students in carrying out learning activities to meet Graduate Learning Outcomes determined by the study program.
29. Organizer is a unit that organizes open courses that can be followed by students from various study programs, both within the scope of the University and across tertiary institutions.
30. User Study Program is a study program that enrolls students in open courses organized by other study programs or other organizing units, both within the scope of UII and across universities.
31. Partners are University Partners or Unit Partners who bind themselves together in mutually beneficial cooperation.
32. Partner Study Programs are study programs outside UII that collaborate with study programs within UII in student exchange programs or credit exchanges and act as organizers and users of cross-college open courses.
33. Participants in Learning Outside the Study Program are UII and non-UII students who take part in Learning activities outside the Study Program.
34. Academic Advisor Lecturer is a lecturer assigned to provide consideration, guidance, consultation, and approval to students for academic matters.

CHAPTER II
STANDAR FACILITATION OF LEARNING OUTSIDE THE STUDY
PROGRAM

Part One
Facilitation of Learning Outside the Study Program

Article 2

1. The fulfillment of the study period and load for undergraduate students or applied undergraduate programs can be carried out by:
 - a. Participate in the entire learning process in the Study Program; or
 - b. Participate in the learning process in the Study Program to fulfill part of the time and learning load and the rest follow the Learning process outside the Study Program
2. Universities, Faculties, Departments, and Study Programs are required to facilitate the fulfillment of the study period and load as referred to in paragraph (1) for students who are interested and meet the requirements as referred to in Article 10 paragraph (1)
3. The facilitation of fulfilling the learning period and burden as referred to in paragraph (1) letter b is carried out through:
 - a. Learning Activities in the Study Program are at least 4 (four) semesters and a maximum of 11 (eleven) semesters;
 - b. Lecture Learning Activities Outside the Study Program at the same university for 1 (one) semester or the equivalent of 20 credits; and
 - c. Lecture Learning Activities Outside the Study Program in similar study programs and/or different study programs at different universities and/or Non-Lecture Learning Activities for a maximum of 2 (two) semesters or the equivalent of 40 credits.
4. Learning outside the Study Program as referred to in Article 1 number 13 letter c and letter d is carried out for students outside the Health Study Program.
5. Non-Lecture Learning Outside the Study Program in the form of Internships/Work Practices can be carried out by students for a maximum of 2 (two) semesters or equivalent to 40 credits while in the form of Research/Research, Teaching Assistance in Education Units, Humanitarian Projects, Entrepreneurial Activities, Studies/Projects Independent, as well as Building Villages/Real Work Courses (KKN) can be carried out by students for a maximum of 1 (one) semester or the equivalent of 20 credits.

Part Two

Adoption of Learning in Outside Study Program in Curriculum

Article 3

1. Undergraduate and Applied Study Programs are required to develop a Study Program Curriculum that facilitates the fulfillment of the study period and burden as follows: referred to in Article 2 paragraph (1).
2. Curriculum Preparation Study Program as referred to in paragraph (1) refers to the regulations regarding guidelines for the preparation of curriculum Study Program in a UII environment equipped with schema study completion and other arrangements related to the planning of Learning activities outside the Study Program.
3. Schema study completion as referred to in paragraph (2) consists of three alternative schemes:
 - a. Schema 1;
 - b. Schema 2; and
 - c. Schema 3.

4. Alternative if the study completion schema as referred to in paragraph (3) separately a detail is contained in the Appendix on the letter A.
5. Kurikulum The Study Program as referred to in paragraph (1) designed based on the completion of the study Schema 1 plus at least one of the study completion schemes, namely Schema 2 or Schema 3 as referred to in paragraph (3) and/or the formulation of other schemes developed by the Study Program.
6. Schema completion of student studies as referred to in paragraph (2) adopt if minimal 3 Non-Learning Activities-Perkusee asfaitha referred to in Article 1 point 15 which supports the competency standards of graduates Study program

CHAPTER III

STANDARDS OF COOPERATIVE LEARNING OUTSIDE THE STUDY PROGRAM

Part One

Learning Cooperation Agreement Outside the Study Program

Article 4

1. The Learning Process Outside the Study Program as referred to in Article 1 number 13 letter b, letter c and letter d is carried out based on a cooperation agreement between the University, Faculties, Departments, or Study Programs with Partners.
2. Cooperation agreements with partner universities are sought to be reciprocal.
3. The stages and the cooperation agreement as referred to in paragraph (1) are carried out in accordance with the regulations regarding the guidelines for implementing cooperation within the UII.

Part Two

Learning Partnership Partners Outside the Study Program

Article 5

1. Cooperation partners in the form of Study Programs from outside UII in the Student Exchange program must meet the following requirements:
 - a. Has been accredited by an accrediting agency in accordance with applicable regulations;
 - b. The institution of origin of the Partner Study Program has been accredited by the BAN-PT institution; and
 - c. Meets additional requirements set by the User Study Program.
2. Cooperation partners from non-university institutions, institutions, or organizations must meet the following requirements:
 - a. Committed to support the Learning program Outside the Study Program by providing mentors and other supporting facilities;
 - b. Have a vision and mission that is in line with the vision and mission of UII;
 - c. Not a political party or community organization affiliated to a political party and not a cigarette producer or producer of non-halal products; and
 - d. Meets additional requirements set by the User Study Program.

Part Three
Technical Guidelines for the Implementation of Learning Outside the Study Program
Article 6

The User Study Program is required to prepare technical guidelines for the implementation of Learning activities outside the Study Program with Partners which at least contain:

- a. The design of equalizing the learning load for Learning activities outside the Study Program as referred to in Article 9 paragraph (1) including learning plans and/or additional assessments by the User Study Program if needed;
- b. Mapping of learning outcomes for Learning activities outside the Study Program with the Learning Outcomes of Graduates in the User Study Program;
- c. List of activity supervisors and/or course supervisors;
- d. Schedule and duration of implementation of learning activities;
- e. Implementing assessment and assessment components;
- f. Sources and schemes of financing;
- g. Learning facilities;
- h. Requirements for prospective Study Participants outside the Study Program along with the registration and selection procedures in the User Study Program along with the quota of participants provided;
- i. Rights and obligations of Learning Participants outside the Study Program;
- j. The duration of the agreement; and
- k. Attached with RPS or RPNP

CHAPTER IV
STANDARDS OF LEARNING COMPETENCY OUTSIDE THE STUDY PROGRAM

Article 7

The Study Program formulates learning outcomes from Learning Activities outside the Study Program that support the fulfillment of Graduate Learning Outcomes.

CHAPTER V
STANDARDS OF LEARNING PROCESS OUTSIDE THE STUDY PROGRAM

Part One
Learning Planning Outside the Study Program
Article 8

1. Planning for the learning process is prepared for each lecture learning activity in the form of RPS and non-lecture learning activities in the form of RPNP.
2. The RPS is prepared by the supervisor from the Operator together with the supervisor from the User Study Program.
3. The RPNP is prepared by the supervisor from the User Study Program together with the supervisor from the Partner.
4. In order to obtain recognition of the full learning load equivalence of Learning activities outside the Study Program for one semester, students must meet the criteria as shown in the Appendix in letter C.

Part Two
Equalization of Learning Materials Outside the Study Program
Article 9

1. Equalization of learning load on Learning activities outside the Study Program can be done through:
 - a. transfer credits to courses already available in the User Study Program curriculum;
or
 - b. credit transfer as a new course inserted in the User Study Program curriculum.
2. The provisions for equalizing student learning loads as referred to in paragraph (1) shall be determined by the User Study Program by taking into account:
 - a. the amount of time for student learning activities that are converted into credits; and
 - b. fulfillment of Graduate Learning Outcomes.
3. Learning Activities Outside the Study Program which are equalized must have a learning load equivalent to 1 (one) credit.

Part Three
Terms, Obligations and Rights of Learning Participants outside the Study Program
Article 10

1. Participants of the activity in Outside the Study Program must meet persyaratan:
 - a. berstatus aktif yang terdaftar di Basis Data Tinggi;
 - b. memenuhi persyaratan lain yang tercantum dalam petunjuk teknis sebagai berikut:
 - c. memenuhi persyaratan Program Studi Mitra sebagai berikut:
2. Participants in Learning Outside the Study Program must:
 - a. planning Learning activities outside the Study Program with Academic Advisors;
 - b. register to take part in Learning Outside activities Program Studi through User Study Program;
 - c. complete the requirements for Learning Outside the Study Program, including participating in the selection if required;
 - d. following learning activities outside the Study Program are in accordance with applicable rules and regulations;
 - e. consult the development of Learning activities di Outside Program Studi to the appointed supervisor oleh User Study Program and supervisor assigned by Mitra; and
 - f. meet other requirements set out in the technical guidelines as referred to in Article 6.
3. Participants who participate in Learning Outside the Study Program at UII are entitled to:
 - a. get the Registration Number Main and Student Identification Number;
 - b. get service education in the courses followed;
 - c. get support services in the form of library access, internet in the UII campus environment, and learning applications used at UII; and
 - d. get other rights in accordance with those listed above in the technical guidelines as referred to in Article 6.

Part Four
Mechanisme Learning Implementation di Outside Study Program
Article 11

1. Mechanisme implementation of Learning activities di Outside the Study Program held at UII for a student UII is as follows.
 - a. The User Study Program offers a package of Learning activities di Outside the Study Program to a student;
 - b. Mahasiswa don registration of Semester Academic Plans;
 - c. student by learning activities outside the study program;
 - d. Dosen enabler to enter value courses through UIIGateway;
 - e. Organizer and the User Study Program do
 - f. evaluation implementation of Learning activities di Outside the Study Program; f. Organizer send a report evaluation of the implementation of Learning activities outside the Study Program to the Directorate of Development Academic; and
 - g. User Study Program reports learning activity data on Luar Study Program to Higher Education Database coordinated by Directorate of Service Academic.
2. Mechanisme implementation of Learning activities di Outside Study Program yang held di Outside UII for UII students are as follows.
 - a. The User Study Program offers a package of Learning activities outside the Study Program to students;
 - b. User Study Program opens registration and conducts selection for prospective participants if necessary;
 - c. The User Study Program processes the registration of the participant's semester academic plan;
 - d. In the case of cooperation at the faculty or study program level, the User Study Program sends a list of participants in Learning activities outside the Study Program to the Partner Study Program accompanied by administrative completeness according to the technical guidelines as referred to in Article 6;
 - e. In the case of university-level cooperation, the Directorate of Partnerships coordinates the sending of a list of participants in Learning activities outside the Study Program accompanied by administrative completeness according to the technical guidelines as referred to in Article 6 to the Partner Institution;
 - f. Students take part in Learning activities outside the Study Program;
 - g. In the case of cooperation at the faculty or study program level, the Partner Study Program sends a list of scores to the User Study Program;
 - h. In the case of university-level cooperation, the list of scores is received by the Directorate of Academic Services for distribution to the User Study Program;
 - i. The User Study Program validates the equalization of student learning loads as referred to in Article 9;
 - j. The faculty enters the value of the equivalence result into the UIIGateway;
 - k. The User and Partner Study Program evaluates the implementation of Learning activities outside the Study Program;
 - l. User Study Program sends implementation evaluation report Learning activities outside the Study Program to the Directorate of Academic Development with a copy to the Directorate of Partnerships; and
 - m. User Study Program reports learning activity data on Outside the Study Program to the Higher Education Database is coordinated by the Directorate of Academic Services.

3. Mechanisme implementation of Learning activities outside the Study Program organized UII for non-students-UII is as follows.
 - a. Mitra send a list of participants for Learning activities di Outside Programm Study and administrative completeness according to the technical guidelines as stated in the meantd in Article 6;
 - b. in terms of cooperation equal level university of admission and validation listr participants are coordinated by the Directorate of Partnerships for submission of the Main Identification Number and Registration NumberInduk Studentke Directorate of Academic Services and submission of UII accounts to the Information System Agency;
 - c. In terms of cooperation at the faculty or study program level publisherimaan and validasi list of participants coordinated by Thelgroana for then didon application for registration number Ufirst and main number Student to Service Directorate Academic and submission of UII accounts to the Information System Agency;
 - d. The organizer processes the registration of the participant's Semester Academic Plan;
 - e. Mastudent mfollow learning activities outside the study program;
 - f. The lecturer enters the value of the course through UIIGateway;
 - g. Dservice directorate Aacademic missue Card Hresult Study Participants NSstudyoutside the Study Program at the suggestion of the Organizer;
 - h. In terms of university-level cooperation, the Directorate of Partnerships coordinates the sending of Study Result Cards and score lists Learning participantsoutside the Study Program to Partners;
 - i. In terms of faculty-level cooperation or study program level, the Study Program sends Study Results Cards and a list of Study Participants scores outside the Study Program to Partners;
 - j. Organizers and Partners evaluate the implementation of activities Learningoutside the Study Program;
 - k. The organizer sends an evaluation report on the implementation of Learning activities outside the Study Program to the Directorate of Academic Development with a copy to the Directorate of Partnerships; and
 - l. Organizers reporting learning activity dataOutside the Study Program to the Higher Education Database coordinated by the Directorate of Academic Services.

Part Five
Ampudan Learning Activity Supervisor
di Outside Study Program
Article 12

1. Learning Facilitator Outside the Study Program in the form of Lecture Learning Activities must meet the requirements according to state regulations and applicable UII regulations.
2. Learning Activities Outside the Study Program in the form of Activities Non-Lectures are carried outunder the guidance of a supervisor appointed by the User Study Program and a field supervisor assigned by the Partner Institution.
3. The requirements for supervisors are determined by the Study Program User.
4. Field supervisor requirements are based on technical guidelines as referred to in Article 6.

Part Six
Mata Learning Supporting University Lecturedi Outside Study Program
Article 13

1. University Courses are classified as Learning outside the Study Program at the same tertiary institution as referred to in Article 2 paragraph (3) letter b.
2. University Courses consist of University Compulsory Courses and Mata University Elective Courses.
3. Mata University Compulsory Tuition in the form of Islamic Religious Education, IslamUlil Albab, Islam Rahmatanlil Alamin, Pancasila Education, and Citizenship Education are organized by the Directorate of Services Academic mthrough the Integrated Lecture Division.
4. Mata Compulsory University Lectures in the form of Real Work Lectures organizedby the Directorate of Research and Community Service through the Real Work Lecture Center.
5. Mata University Elective Lectures heldby Units at the University and/or Study Program level under the coordination of the Directorate of Academic Services through the Integrated Lecture Division.
6. Unit organizer Mata University lectures are in charge of preparing,melcarry out monitoring and evaluation as well as compilinglcourse implementation reports.
7. Unit organizers of University Courses are authorized to determine registration procedures, prepare Development PlanseSemester lessons, schedule, as well as suggesting tutorsiah.

CHAPTER VI
STANDR ASSESSMENT AND ASSESSMENT OF LEARNING OUTSIDE THE
STUDY PROGRAM
Article 14

1. Assessment for Learning activities outside the Study Program can be carried out using the following assessment techniques
 - a. Written Test/Exam;
 - b. Oral Test/Exam or interview;
 - c. Creation of works;
 - d. Project assignment;
 - e. Observation of performance and behavior;
 - f. Questionnaire;
 - g. Self reflection;
 - h. Focus group discussions;
 - i. Portfolio, and/or
 - j. Another assessment technique that can measure the fulfillment of the intended learning achievement.
2. Selected assessment techniques is directed towards an authentic assessmenttik.
3. Peniother activities Learning Lectures are carried out by supporting lecturers.
4. Penilaian Activities Non-Learning-Lectures carried out by the tutoring together with the field supervisor who can helpolehstakeholder which is relevant.

Article 15

The Study Program ensures the learning activities and assessment techniques selected are constructively aligned with the intended learning outcomes.

CHAPTER VII STANDAR MONITORING DAN LEARNING EVALUATION DI OUTSIDE THE STUDY PROGRAM

Article 16

1. Monitoring of Lecture Learning Activities is carried out by the lecturer in charge of the course by sending a learning progress report to the lecturer assigned by the User Study Program at least once during the implementation of the activity.
2. Non-Learning monitoring-Lectures are carried out by the supervisor of the User Study Program by periodically checking the log book compiled by students using online applications.
3. Student Non-Learning Activity participants-Pelecture must consult with the supervisor at least once per month.
4. User Study Program and Partners conduct an evaluation as late as-slow 2 weeks after Learning Outside Study Program completed.
5. The minimum evaluation materials for Learning Outside the Study Program are:
 - a. The results of observations and reflections by lecturers and supervisors;
 - b. The results of questionnaires from students regarding reflections on students' experiences and learning outcomes;
 - c. Laporan implementation by the organizer; and
 - d. Value list/ level achievement fulfillment learning.
6. Learning evaluation discussion Outside the Study Program at least covers aspects of-aspek as following:
 - a. Suitability of learning load during activities with recognized credits;
 - b. The suitability of the criteria as referred to in Article 8 paragraph (4);
 - c. The suitability of the learning outcomes of activities with the Achievements Graduate Learning;
 - d. Achievement level learning activities;
 - e. Learning support facilities;
 - f. Activity financing;
 - g. Contribution participants during learning activities;
 - h. Assessment and assessment; and
 - i. Monitoring of learning activities.
7. Delivery of Learning Evaluation Report outside the Study Program as referred to in Article 11 paragraph (1) letter f, paragraph (2) letter 1, as well as paragraph (3) the letter k is done as late as-no later than 1 month after activity Learning Outside the Study Program is complete.

CHAPTER VIII
STANDAR LEARNING FINANCING DI OUTSIDE THE STUDY PROGRAM
Article 17

1. Compound Learning activities financing di Outside the Study Program consists of: i) cost variable per credit, the cost of supporting facilities, the cost of practice/practiceikum, as well as other cost components in accordance with the technical guidelines as referred to in Article 6.
2. Controllern lain regarding the financing of learning activities di Outside Programm Studies are regulated through separate regulations.

CHAPTER IX
PENJAMINAN QUALITY OF LEARNING OUTSIDE THE STUDY PROGRAM
Article 18

Implementasi quality assurance of Learning Programs Outside the Program studi di UII refers to the UII Quality Assurance System.

CHAPTER X
PROVISIONS TRANSITION
Article 19

1. Program Current Applied Undergraduate and Undergraduate Program Studies akan course review proses kurikulum, obligatory accommodate Learning activities di Outside the Study Program into the proposed curriculum document which will be submitted for approval.
2. Program Studi of Applied Undergraduate and Undergraduate Programs that have not been
maka akan peninjauan the curriculum as a whole must accommodate learning activities di Outside the Study Program at least in the form of a study completion schema into the curriculum structure and then submitting it to the Chancellor for approval.
3. Program Studi Program Bachelor and Applied Bachelor are required to do curriculum adjustments as referred to in paragraph (1) or paragraph (2) dan implement as soon as possible in the academic year 2021/2022.

CHAPTER XI
CLOSING PROVISIONS
Article 20

Listen applies This Rector's Regulation, as long as tidak is specifically regulated in this Regulation, then the provisions stipulated in this Regulation apply lam Rector's Regulation No 2 of 2019 concerning Guidelines for the Preparation of the P Curriculum Program Studi di Environment of the Islamic University of Indonesia., P closeuran Chancellor No 2 of 2019 concerning Guidelines for Preparation Kurikulum Studi Program at the Indonesian Islamic University she.

Article 21


Regulationsn The Chancellor is effective on the date of stipulation.

In order to everyone knows it, order documentation regulationsn This is in the News of the Indonesian Islamic University.

Billaahittaufiq wal hidaayah

Issued in : Yogyakarta
At time : 6 Jumadilawal 1442 H
December 21st, 2020 M

RECTOR,

The image shows a circular official stamp of Universitas Islam Indonesia (UII) in Yogyakarta. The stamp contains the text "UNIVERSITAS ISLAM INDONESIA" around the top and "YOGYAKARTA" around the bottom. In the center, there is a star and the word "REKTOR". Overlaid on the stamp is a handwritten signature in blue ink, which appears to be "Fathul Wahid".

Prof. Fathul Wahid, S.T., M.Sc., Ph.D.

NEWS OF THE UNIVERSITAS ISLAM INDONESIA YEAR 2020 NUMBER OF 47

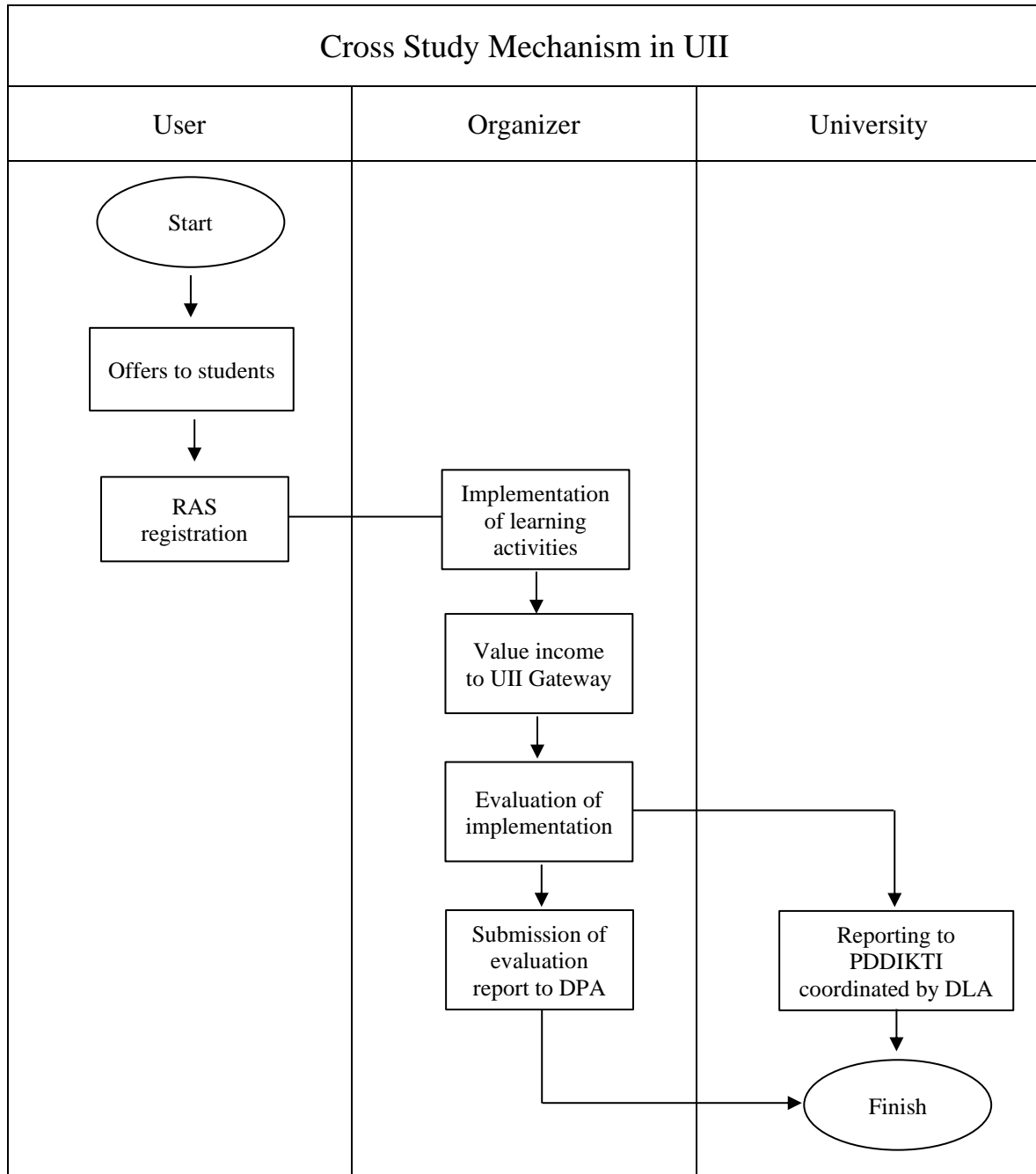
ATTACHMENT
REGULATION OF THE RECTOR OF THE
UNIVERSITY OF ISLAMIC INDONESIA NUMBER
19 YEAR 2020 CONCERNING THE
ORGANIZATION OF LEARNING OUTSIDE THE
STUDY PROGRAM IN THE ENVIRONMENT OF
THE INDONESIAN ISLAMIC UNIVERSITY

A. Alternative Study Completion Schemes for Undergraduate Students

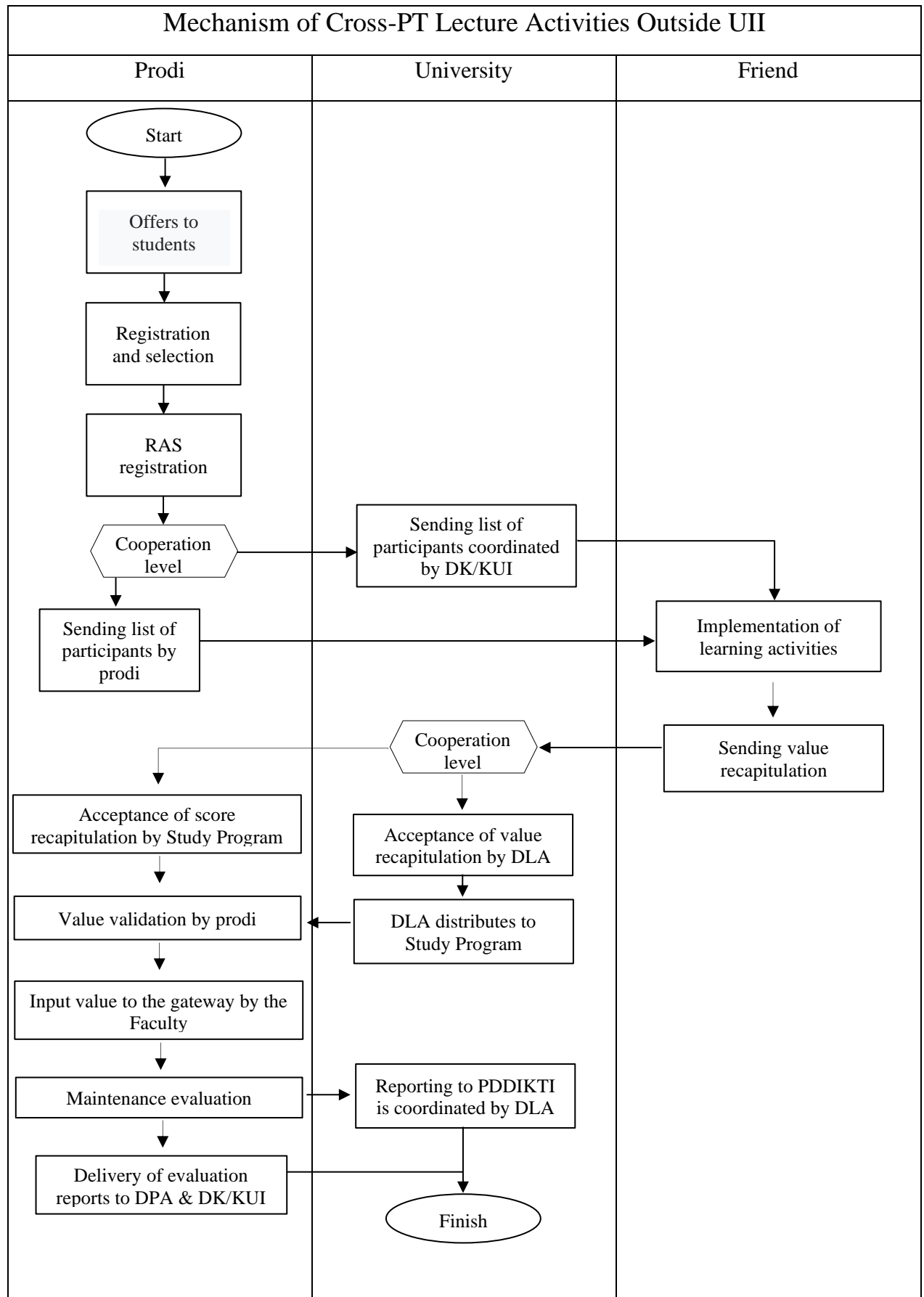
Scheme	The Load of Learning Activities in the Study Program as referred to in Article 2 paragraph (3) letter a	The burden of Lecture Learning Activities outside the Study Program at the same university as referred to in Article 1 paragraph (3) letter b	Load of Lecture Learning Activities Outside the Study Program in similar study programs or different study programs at different universities and/or Non-Lecture Learning Activities as referred to in Article 2 paragraph (3) letter c	Total credits
Schematic 1	126 – 144 credits	12 credits of University-managed MKWU	2-3 credits of work practice 2-3 credits of KKN	144-160 credits
Schematic 2	104 – 120 credits (equivalent to 6 semesters)	Maximum 20 credits (1 semester equivalent) consisting of 12 credits of MKWU managed by the University + 8 credits across study programs	Maximum 20 credits (equivalent to 1 semester)	144 – 166 credits
Schematic 3	84 – 100 credits (equivalent to 5 semesters)	Maximum 20 credits (1 semester equivalent) consisting of 12 credits of MKWU managed by the University + 8 credits across study programs	Maximum 40 credits (equivalent to 2 semesters)	144 – 160 credits

B. Mechanism of Implementation of Learning Activities Outside the Study Program Held at UII for UII Students

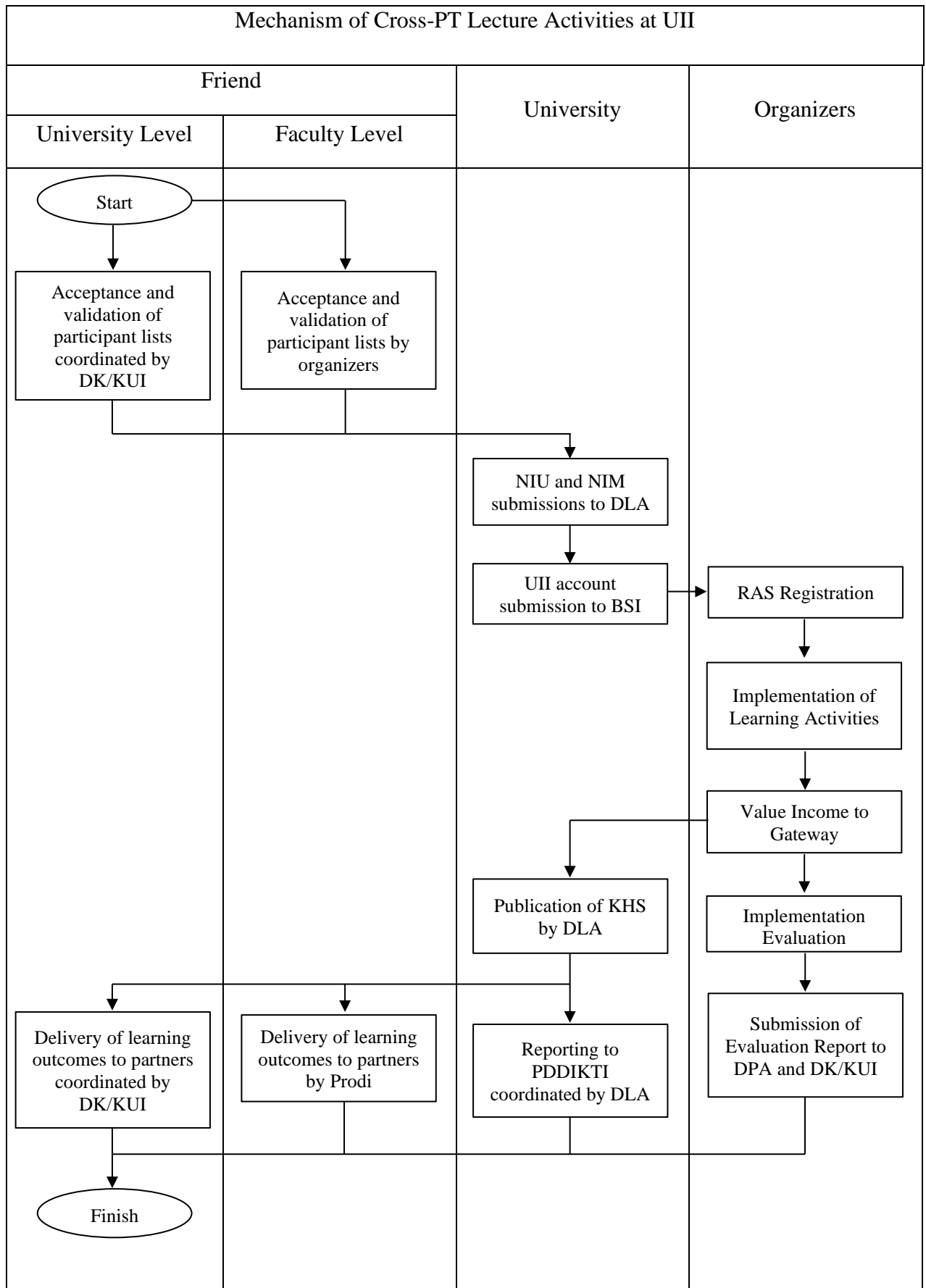
1. Mechanism of implementation of Study Program Outside Learning activities held at UII for UII students



2. Mechanism of Implementation of Learning Activities Outside the Study Program held outside UII for UII students



3. Mechanism of implementation of Learning Activities Outside study program held at UII for non UII students



C. Criteria for Recognition of the Full Learning Material Equalization Learning Activities Outside the Study Program for One Semester

No	Form Learning	Criteria
1.	Exchange Student	<ul style="list-style-type: none"> a. The courses taken meet the provisions in the user study program curriculum. b. Meet the additional criteria set by the study program.
2.	Intern/Practice Work	<ul style="list-style-type: none"> a. The level of ability developed during the internship is equivalent to the undergraduate level. b. Students prepare activity proposals under the supervision of their supervisor before carrying out activities. c. Students not only act as observers but are actively involved and contribute as part of a team in business/production processes carried out by Partners, such as problem-solving, increasing efficiency or competitiveness, or developing systems or products. d. Fill out the logbook/activity notes periodically using online applications. e. Students get feedback from field supervisors and/or representatives of unit/company leaders on their performance at least once a month. f. Students give presentations to representatives of Partner leadership at least once at the end of the internship. g. Students Prepare reports and reflections on internships/work practices under the supervision of supervisors and field supervisors. h. Meet the additional criteria set by the study program.
3.	Teaching Assistant in Education Unit	<ul style="list-style-type: none"> a. The achievement of the target is evaluated at the end of the activity. b. Determine the target to be achieved at the end of the activity. c. Students prepare activity proposals under the supervision of their supervisor before carrying out activities. d. Students are actively involved and contribute as part of a team in planning, processing, and evaluating learning in schools. e. Fill out the logbook/activity records periodically using online applications. f. Students receive feedback on their performance at least once per month from their supervisor and/or school leadership representative.

		<ul style="list-style-type: none"> g. Students give presentations to representatives of school leaders at least once at the end of the program. h. Students prepare reports and reflections on activities under the supervision of supervisors and supervisors from the school. i. Meet the additional criteria set by the study program.
4.	Research / Research	<ul style="list-style-type: none"> a. The type of research and the level of difficulty must match the undergraduate level. b. Determine the target to be achieved at the end of the activity. c. Students prepare activity proposals under the supervision of their supervisor before carrying out activities. d. Students are actively involved and contribute as part of a team in planning and implementing research to making reports and presenting research results. e. Fill out the logbook/activity notes periodically using online applications. f. Students receive feedback on their performance at least once per month from supervisors. g. Students Prepare reports and reflections on activities under the supervision of supervisors and supervisors from the school. h. Meet the additional criteria set by the study program.
5.	Project Humanity	<ul style="list-style-type: none"> a. Determine the target to be achieved at the end of the activity. b. Students prepare activity proposals under the supervision of their supervisor before carrying out activities. c. Students are actively involved and contribute as part of a team in 1 or 2 main projects which can be: <ul style="list-style-type: none"> 1) Settlement of social problems; 2) Providing manpower assistance for disaster management; clan/or 3) Da'wah activities. d. Fill out the logbook/activity notes periodically using online applications. e. Produce real impact at the end of the activity. f. Students consult the progress of activities with their supervisor at least once a month. g. Students prepare reports and reflections on activities under the supervision of supervisors and supervisors. h. Meet the additional criteria set by the study program.

		<ul style="list-style-type: none"> i. Especially for da'wah activities, it meets the criteria set by the Directorate of Islamic Education and Development.
6.	Entrepreneurial Activities	<ul style="list-style-type: none"> a. Have a business plan and targets (short and long term) in the form of a business proposal or canvas. b. Students are actively involved and contribute in: <ul style="list-style-type: none"> 1. Product and/or service development; 2. Marketing of products and/or services; 3. Resource development and management; and/or Financial management. c. Fill out the logbook/activity notes periodically using online applications. d. Students consult the progress of activities with their supervisor at least once a month. e. Students prepare reports and reflections on activities under the supervision of supervisors and mentors. f. Meet the criteria for business sustainability set by the Directorate of Growth Nodes g. Meet the additional criteria set by the study program.
7.	Independent Study	<ul style="list-style-type: none"> a. The type and level of difficulty of the activity corresponding to the undergraduate level. b. Independent study topics are not offered in the College or Study Program curriculum at this time. c. Students are actively involved and contribute to personal projects or collaborative projects. d. Students prepare activity proposals under the supervision of their supervisor before carrying out activities that at least contain the objectives of independent activities, learning designs and plans, activity stages, and targets to be achieved at the end of the activity. e. Fill out the logbook/activity records periodically using online applications. f. Produce real impact at the end of the activity. g. Students consult the progress of activities with their supervisor at least once a month. h. Students prepare reports and reflections on activities under the supervision of supervisors and supervisors. i. Meet the additional criteria set by the study program
8.	Building a Village	<ul style="list-style-type: none"> a. Determine the target to be achieved at the end of the activity b. Students prepare activity proposals under the supervision of their supervisor before carrying out activities.

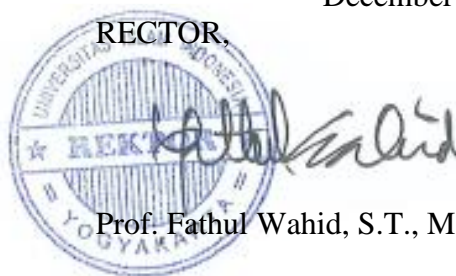
		<p>c. Students are actively involved and contribute as part of a team in 1 or 2 main projects which can be:</p> <ol style="list-style-type: none"> 1) Increasing production and marketing of agricultural, plantation, animal husbandry, forestry, fishery, or marine products; 2) Increasing the entrepreneurial capacity of the community through cooperatives, Micro, Small, and Medium Enterprises, and/or Village-Owned Enterprises; and/or 3) Solving social problems. <p>d. Fill out the logbook/activity notes periodically using online applications.</p> <p>e. Produce real impact at the end of the activity.</p> <p>f. Students consult the progress of activities with their supervisor at least once a month.</p> <p>g. Students prepare reports and reflections on activities under the supervision of supervisors and supervisors.</p> <p>h. Meet the additional criteria set by the Directorate of Research Development and Community Service and study programs</p>
--	--	--

Issued in : Yogyakarta

At time : 6 Jumadilawal 1442 H

December 21st, 2020 M

RECTOR,



Prof. Fathul Wahid, S.T., M.Sc., Ph.D.